



RESEARCH

Open Access

Cytolytic T lymphocytes from HLA-B8⁺ donors frequently recognize the Hodgkin's lymphoma associated latent membrane protein 2 of Epstein Barr virus

Ming L Tsang¹ and Christian Münz^{1,2*}

Abstract

Epstein Barr virus (EBV) is a lymphotropic γ -herpesvirus that infects more than 90% of the adult human population. It transforms B cells *in vitro* and is associated with lymphomas *in vivo*. In most EBV carriers the emergence of these malignancies, however, is prevented by T cell mediated immune control. Part of this control is mediated by CD8⁺ T cells, which mainly target a subset of viral nuclear antigens, EBNA3A, B and C, in healthy EBV carriers. In HLA-B8 positive individuals, the dominant CTL response is biased towards recognition of EBNA3A. However, spontaneously arising EBV-associated malignancies, such as Hodgkin's lymphoma and nasopharyngeal carcinoma do not express EBNA3s and instead express latent membrane protein 2 (LMP2) as well as LMP1 and EBNA1. Here we describe the new HLA-B8 restricted, LMP2 derived CD8⁺ T cell epitope, LMP2₃₄₅₋₃₅₂. Although the frequency of LMP2₃₄₅₋₃₅₂ specific CD8⁺ T cells is usually lower than immunodominant EBNA3A specific CD8⁺ T cells in fresh blood, the former can be expanded in the majority of HLA-B8⁺ EBV carriers after 1 week co-culture with peptide pulsed dendritic cells. We demonstrate that LMP2₃₄₅₋₃₅₂ specific CD8⁺ T cells secrete IFN- γ and kill both peptide pulsed targets as well as HLA-B8 matched LCL and LMP2 expressing Hodgkin's lymphoma cells. We suggest that cytotoxic CD8⁺ T cell responses against LMP2 coexist with the immunodominant EBNA3 specific responses in healthy EBV carriers and help to resist EBV associated malignancies.

Introduction

The human γ -herpesvirus Epstein Barr virus (EBV) establishes a life-long, mostly asymptomatic infection in more than 90% of human adults. In immune competent hosts, it persists in latently infected B cells. EBV reservoirs under immune control are located in the peripheral blood and secondary lymphoid organs like the tonsils. Virus infected naïve B cells in tonsils of healthy EBV carriers express all latent antigens, the six nuclear antigens (EBNA1, 2, 3A, 3B, 3C and LP) and the two membrane proteins (LMP1 and 2) [1]. This expression pattern can also be found after transformation of B cells in immunosuppressed hosts or *in vitro* generated lymphoblastoid cell lines (LCL) [2]. The subset of virus

carrying centroblasts and centrocytes in donors that have established immune control of EBV only express EBNA1, LMP1 and LMP2 [1,3]. This expression pattern is also found in most spontaneously arising EBV associated malignancies, like Hodgkin's disease and nasopharyngeal carcinoma [4]. In peripheral blood, EBV can be found in memory B cells expressing none of the latent EBV antigens [5] or EBNA1 during homeostatic proliferation [6]. Thus, healthy EBV carriers already harbor EBV infected B cells with transforming viral antigen expression patterns similar to EBV associated malignancies.

EBV transformed B cells are controlled by T cell immunity in healthy EBV carriers [7]. This becomes apparent in patients with T cell compromising co-infection with the human immunodeficiency virus (HIV), genetic lesions like X-linked lymphoproliferative disease (XLP) and immunosuppressive treatment after allograft

* Correspondence: christian.muenz@uzh.ch

¹Laboratory of Cellular Physiology and Immunology, The Rockefeller University, New York, USA

Full list of author information is available at the end of the article

transplantation. In all these instances EBV associated lymphomas occur at increased frequencies with especially in XLP patients often fatal outcome [4,8-10]. Some of these can be treated by adoptive transfer of in vitro expanded T cell lines [11], suggesting that T cells form a crucial component of EBV specific immune control.

Some of these lines are dominated by CD8⁺ T cells specific for EBNA3 proteins [12,13]. Restricted by the common HLA-B8 haplotype, EBNA3A can be recognized with high frequency by CD8⁺ T cells (EBNA3A₃₂₅₋₃₃₃: 1-3% in acute infectious mononucleosis and 0.1-1% in healthy EBV carriers) [14], and forms the immunodominant specificity in this HLA background. However, EBNA3A, 3B and 3C are not expressed in most spontaneously arising EBV malignancies, like Hodgkin's disease and nasopharyngeal carcinoma, and other specificities are required to mediate resistance against these malignancies by most EBV⁺ individuals. Of the antigens expressed in these tumors, i.e., EBNA1, LMP1 and LMP2, only LMP2 is frequently recognized by CD8⁺ T cells [15-17]. Thus, we addressed if HLA-B8⁺ healthy EBV carriers carry in addition to their immunodominant EBNA3A specific response LMP2 specific CD8⁺ T cells, which might allow them to resist the development of EBV associated malignancies that lack EBNA3 expression. Indeed, we frequently found in HLA-B8⁺ healthy donors CD8⁺ T cells for the new LMP2₃₄₅₋₃₅₂ epitope, although their frequency is usually lower than that of EBNA3A specific CD8⁺ T cells in fresh blood. However, after 1 week expansion with peptide pulsed dendritic cells, the frequency of LMP2₃₄₅₋₃₅₂ specific, HLA-B8 restricted CD8⁺ T cells is similar to LMP2₄₂₆₋₄₃₄ specific, HLA-A2 restricted and EBNA3A₃₂₅₋₃₃₃ specific, HLA-B8 restricted CD8⁺ T cells. LMP2₃₄₅₋₃₅₂ specific CD8⁺ T cell clones secrete IFN- γ and show cytolytic activity upon encounter of 10 nM peptide pulsed targets, HLA-B8 matched LCL and HLA-B8⁺ LMP2 expressing Hodgkin's cells. The LMP2 and EBNA3A specific CD8⁺ T cell responses also can be visualized in fresh blood by staining for IFN- γ production and CD69 expression. While intracellular cytokine staining detected only a fraction of the stimulated T cells, CD69 staining leads to identification of nearly all antigen reactive cells. Our findings indicate that the presence of LMP2 specific CD8⁺ T cells can be detected even in HLA-B8⁺ individuals, whose latent EBV antigen specific CD8⁺ T cell response is usually dominated by EBNA3A specific cells. We suggest that LMP2 specific CD8⁺ T cell responses contribute to protection against spontaneously arising EBV associated tumors in healthy carriers and should be exploited in cancer patients lacking this immune control.

Materials and methods

Cell lines

The EBV transformed B cell lines LG2 (HLA-B8⁻) [18], BC-LCL (HLA-B8⁻), CM-LCL (HLA-B8⁻), DC-LCL (HLA-B8⁻), SO-LCL (HLA-B8⁺), JT-LCL (HLA-B8⁺) and BM-LCL (HLA-B8⁺) [19] were cultured in RPMI-1640 + 10% FCS + glutamine + gentamicin. The CEM/LCL hybrid T2 [20] and the EBV Hodgkin's lymphoma cell line HDLM-2 (DMSZ, Braunschweig, Germany) were also cultured in RPMI-1640 + 10% FCS + glutamine + gentamicin.

Dendritic cells (DC)

As previously described [21], PBMCs from leukocyte concentrates (buffy coats of the New York blood bank) were isolated on Ficoll-Paque (Pharmacia) and separated by rosetting into T-cell enriched (ER⁺) and depleted (ER⁻) populations. 3×10^6 ER⁻ PBMC/well or adherent cells from 10^7 PBMC/well were plated in 6-well plates with RPMI-1640 + 1% single donor plasma + glutamine + gentamicin. 500 μ l medium were added at day 2, 4 and 6 per well. rhIL-4 and rhGM-CSF were added to a final concentration of 500 and 1000 U/ml, respectively, at day 0, 2, 4 and 6. On day 6, the floating immature DCs were transferred to new plates at 10^6 cells/well and half of the medium was replaced with fresh medium containing IL-1 β /IL-6/TNF α /PGE₂ (all except PGE₂ from R&D Systems, Minneapolis, MN; PGE₂: Sigma, St. Louis, MO) to mature the DCs for two days. The maturation cytokines were added to a final concentration of IL-1 β , 10 ng/ml, IL-6, 1000 U/ml, TNF α , 10 ng/ml, and PGE₂, 1 μ g/ml. DCs and T cells were used fresh or following cryopreservation. DCs were infected with recombinant vaccinia viruses (MOI 2) after maturation as described previously [19].

Vaccinia virus stock generation and infection of DCs

Recombinant vaccinia viruses (vv) were expanded and titrated as previously described [19].

Generation of CD8⁺ T cell lines and clones

Positive selection for CD8⁺ PBMC from serologically HLA-B8⁺ typed leukocyte concentrates was performed using α CD8-MicroBeads, MS⁺/RS⁺ columns and Mini-MACS separator (Miltenyi Biotec, Bergisch-Gladbach, Germany). CD8⁺ T cells were stimulated with irradiated (3000 rad) mature DCs at a ratio of 30:1 (T:DC) or irradiated (20000 rad) LCL at a ratio 10:1 (T:DC) in RPMI + 5% AB serum + glutamine + gentamicin. DCs were pulsed for one hour with synthetic peptides at 37°C and 10 μ M peptide concentration in serum-free RPMI prior to stimulation. LMP2₃₄₅₋₃₅₂ specific CD8⁺ T cells were cloned at 10, 1 or 0.3 T cells/well in RPMI + 8% AB

serum + 150 IU/ml rhIL-2 (Chiron, Emeryville, CA) + 1 µg/ml PHA-L (Sigma, St. Louis, MO) + glutamine + gentamicin. 10^5 irradiated PBMC (3000 rad) and 2×10^4 irradiated LCL (20000 rad)/well were added as feeders [22]. After 14d, expanding wells were tested in split-well IFN- γ ELISPOT assays against LMP2₃₄₅₋₃₅₂, LMP2₃₄₇₋₃₅₅, HLA-B8 matched and mismatched LCL.

FACS analysis

T cell clones were stained with simultest α CD4-FITC/ α CD8-PE and isotype controls IgG1-FITC/IgG2a-PE (BD Pharmingen, San Diego, CA). Samples were analyzed on a FACScalibur (BD Pharmingen). HLA-B8⁺ leucocyte concentrate donors were identified by staining of PBMC with α HLA-B8 antibody (One Lambda, Canoga Park, CA) and α mouseIgM-PE (Biosource, Camarillo, CA).

ELISPOT assay

ELISPOT assays were performed as previously described [21]. MAHA S45 plates (Millipore, Bedford, MA) were coated with α IFN- γ antibody 1-D1K (MABTECH). Plates were blocked with DMEM + 5% HS. Afterwards, indicated amounts of responder T cells and 3×10^3 stimulator DCs, 10^4 LCL, 10^4 Hodgkin's lymphoma cells or 1 pM to 25 µM of the respective peptide epitopes were added per well and incubated for 1 day. Where indicated target cells were pulsed with 10 µM of the respective peptides for 1 h at 37°C in RPMI without supplements and then washed before addition to the ELISPOT co-cultures. Then the plates were incubated with biotinylated α IFN- γ antibody 7-B6-1 (MABTECH). Afterwards, preassembled avidin-peroxidase-complexes Vectastain ABC kit (Vector laboratories, Burlingame, CA) was added. Spots were developed by addition of stable DAB (Research Genetics, Huntsville, AL). Plates were washed 3 times with water and air-dried. SFC (spot forming cells) were counted using a stereomicroscope (mean counts of triplicates). Where indicated, α HLA-DR antibody L243 [23], α HLA-A, B, C antibody w6/32 [24] or α HLA-B8 antibody (One Lambda) was added at the indicated concentrations.

⁵¹Cr release assay

Targets were labeled with 50 µCi Na₂⁵¹CrO₄ for 45 min at 37°C. Labeled targets were incubated for 4-5 h with CTL in RPMI + 10% FCS + 2 mM glutamine. Afterwards an aliquot of the supernatant was harvested and counted in Wallac OptiPhase SuperMix scintillation fluid in a Wallac 1450 MicroBeta TriLux plate counter (Wallac, Turku, Finland). Percent specific lysis was calculated by $([\text{cpm experimental well} - \text{cpm spontaneous release}] / [\text{cpm maximum release} - \text{cpm spontaneous release}]) \times 100\%$. Spontaneous release was determined by incubating the labeled targets with medium, and

maximum release by incubating targets in 1% Triton X-100 solution.

Intracellular cytokine assay

500 µl of heparinized whole blood was placed in 5 ml polypropylene tubes (Fischer Scientific, Pittsburgh, PA) with 1 µg/ml of each of anti-CD28 and anti-CD49d (BD Pharmingen), 10 µg/ml Brefeldin A (Sigma) and either RPMI (negative control), 10 µg/ml PHA (positive control), 10 µl 1 mM LMP2₃₄₅₋₃₅₂, LMP2₃₄₇₋₃₅₅ and EBNA3A₃₂₅₋₃₃₃ solution. Cells were incubated for 6 hours at 37°C in 5% CO₂. 20 mM EDTA was added for 15 minutes followed by 9 volumes of FACS Lysing Solution (BD Pharmingen) for 10 minutes at RT. Samples were then frozen at -80°C. Samples were subsequently thawed and permeabilized with 0.1% saponin and 0.1% BSA for ten minutes at RT. Cells were spun down and supernatant was decanted. The α IFN- γ -PE, α CD8-PerCP and α CD69-FITC antibodies (BD Pharmingen) were added for 30 minutes at room temperature. Samples were then washed with the permeabilization solution and fixed with 1% PFA. FACS acquisition was performed on a 4 color FACSort (BD Pharmingen). Gates were set on CD8⁺ cells, and autofluorescent cells were excluded in a channel for which no fluorochrome was added in the staining (FL-4). Gates were combined and 50,000 events were collected for each condition.

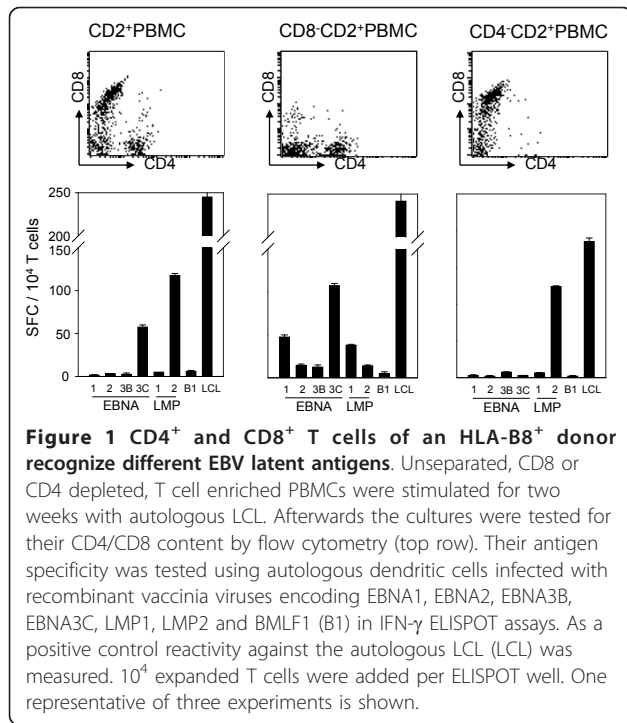
Statistical evaluation

Statistical analyses were performed with the student T test. P values lower than 0.05 were considered significant. Plotted data are displayed as mean with standard deviation (SD).

Results

CD8⁺ and CD4⁺ T cells of the same donor recognize different EBV latent antigens

Autologous B lymphocyte cell lines (LCL) from a healthy HLA-B8⁺ EBV carrier were used to stimulate unseparated and CD8 or CD4 depleted PBMCs for 2 weeks. Afterwards, the cultures were assayed for IFN- γ secretion in response to the autologous LCL or alternatively, autologous DCs infected with recombinant vaccinia viruses encoding the latent EBV antigens EBNA1, EBNA2, EBNA3B, EBNA3C, LMP1 and LMP2 as well as the lytic EBV antigen BMLF1 (Figure 1). The CD8⁺ T cell response was directed mainly towards EBNA1, EBNA3C and LMP1, while the CD4⁺ T cell response was predominantly LMP2 specific. The T cell-enriched PBMC fraction demonstrated the reactivities that dominated the CD4⁺ and CD8⁺ T cell responses, i.e., EBNA3C and LMP2, respectively. This donor is representative of published findings on immune responses to those EBV latent antigens that are expressed in



spontaneously arising tumors like Hodgkin's lymphoma and nasopharyngeal carcinoma; EBNA1 and LMP1 are mainly recognized by CD4⁺ T cells while LMP2 can be targeted by CD8⁺ T cells at least in HLA-A2 positive individuals with considerable frequency [7].

Characterization of a novel LMP2 derived HLA-B8 restricted CD8⁺ T cell epitope

Four programs were used to predict HLA-B8 presented epitopes from LMP2 (Table 1). HLA-B8 was chosen since strong EBNA3A specific CD8⁺ T cell responses restricted by this haplotype had been described [25], and we wanted to determine if the presence of strong CD8⁺ T cell responses against the dominant EBNA3 latent antigens, would affect the occurrence of LMP2 specific CD8⁺ T cells. Furthermore, HLA-B8 is the third most frequent HLA-B allele in the United States (8.5% of the

population, after HLA-B44: 11.8% and HLA-B7: 10.9%) [26]. Two of these programs, SYFPEITHI [27] and BIMAS [28], predict peptide similarity to naturally eluted MHC ligands and estimate half time of disassociation from a particular MHC molecule, respectively. The other two programs, PAProC [29,30] and NetChop [31], were used to predict generation of the C-terminus of the candidate peptides by the proteasome. While N-terminal trimming can still occur in the ER, the C-terminus of most MHC class I ligands has to be generated by the proteasome [32]. PAProC version I bases its predictions on the in vitro protein digestions with the proteasome [29,30], while version II takes also in account the C-termini of naturally eluted MHC ligands [33]. These four programs were used to predict LMP2 derived octamers and nonamers for HLA-B8 presentation, since natural HLA-B8 ligands are generally of this length [27]. As summarized in Table 1, 6 peptides were predicted from the B95.8 LMP2 primary sequence to bind to HLA-B8 and to be generated by proteasomal C-terminal cleavage by at least one of the programs: 172-179, 234-242, 345-352, 347-355, 350-357 and 352-360.

LMP2₃₄₅₋₃₅₂ is frequently recognized by HLA-B8⁺ CD8⁺ T cells

All predicted LMP2 peptides were synthesized and pulsed on autologous DCs for stimulation of HLA-B8⁺ CD8⁺ T cells. As a positive control, the dominant latent EBV epitope restricted by HLA-B8, EBNA3A₃₂₅₋₃₃₃, was used. For a negative control, stimulation with unpulsed DCs was performed in parallel. After one week, the cultures were analyzed for IFN- γ secretion in response to autologous DCs infected with recombinant vaccinia viruses encoding LMP2 or EBNA3A or the control virus vvTK⁻ (Table 2). We used ELISPOT assays to enumerate IFN- γ secreting cells. Of the predicted LMP2 peptides, only LMP2₃₄₅₋₃₅₂ stimulated LMP2 specific CD8⁺ T cells in a large proportion of the HLA-B8⁺ donors. By the criterion of 10 spots over background and at least a 1.5 ratio of vvLMP2 to vvTK⁻ directed spots for a specific response, we could stimulate LMP2 specific CD8⁺ T

Table 1 Predicted HLA-B8 binding peptides derived from LMP2

LMP2 sequence	Amino acid sequence	SYFPEITHI rank/score*	BIMAS rank/value*	PAProC C-terminal cleavage prediction by version I or II	NetChop C-terminal cleavage prediction by version 2.0
172-179	AAAQRKLL	3 ⁸ /22	1 ⁸ /16.0	+/+	-
234-242	AYRRRWRRRL	1 ⁹ /24	2 ⁹ /8.0	+/+	+
345-352	CPLSKILL	1 ⁸ /26	2 ⁸ /16.0	-/+	-
347-355	LSKILLARL	3 ⁹ /20	3 ⁹ /4.0	+/+	+
350-357	ILLARLFL	2 ⁸ /25	3 ⁸ /8.0	+/-	-
352-360	LARFLYAL	2 ⁹ /22	1 ⁹ /16.0	-/+	+

*Separate predictions were performed for octamers (X⁸) and nonamers (X⁹). Therefore, each rank can appear twice. Predicted scores or values for the two MHC ligand prediction programs SYFPEITHI and BIMAS as well as the proteasomal cleavage prediction programs PAProC and NetChop are shown.

Table 2 CD8⁺ T lymphocytes from HLA-B8⁺ donors frequently recognize the latent membrane protein 2 of Epstein Barr virus

Donor	DCs only		DC + LMP2 ₃₄₅₋₃₅₂		DC + EBNA3A ₃₂₅₋₃₃₃	
	vvTK-	vvLMP2	vvTK-	vvLMP2	vvTK-	vvEBNA3A
#1	0 ± 0*	0 ± 0	0 ± 0	27.5 ± 1.5	10 ± 7	27 ± 0
#2	12 ± 1	8.5 ± 1.5	7.5 ± 0.5	19 ± 3	17 ± 0	30 ± 5
#3	14 ± 1	0.5 ± 0.5	1 ± 0	27.5 ± 3.5	7.5 ± 0.5	24 ± 3
#4	105 ± 15	37.5 ± 2.5	25.5 ± 9.5	70 ± 6	26 ± 1	79 ± 11
#5	8.5 ± 0.5	6 ± 3	1.5 ± 1.5	10.5 ± 0.5	9 ± 1	13 ± 1
#6	232.5 ± 8.5	230.5 ± 3.5	305 ± 27	581.5 ± 58.5	115 ± 5	205 ± 24
#7	5 ± 3	5.5 ± 2.5	3.5 ± 1.5	16 ± 2	10 ± 1	19 ± 1
#8	1 ± 1	2 ± 1	0 ± 0	6 ± 1	7 ± 1	60 ± 5
#9	27.5 ± 3.5	5 ± 1	3.5 ± 0.5	10.5 ± 2.5	37.5 ± 7.5	52 ± 2
#10	13 ± 2	27 ± 7	14 ± 1	74 ± 9	15 ± 3	68 ± 7
#11	25 ± 11	28 ± 6	25 ± 5	85 ± 21	23 ± 2	121.5 ± 13.5

*spot forming cells (SFC)/5 × 10⁴ cells. HLA-B8⁺ CD8⁺ T cells were stimulated for one week with dendritic cells pulsed with no peptide, LMP2₃₄₅₋₃₅₂ or EBNA3A₃₂₅₋₃₃₃ and then analyzed in ELISPOT assays against vvTK, vvLMP2 and vvEBNA3A infected DCs. Specific responses as judged by the criterion of 10 spots over background and at least a 1.5 ratio of vvLMP2 to vvTK stimulated spots are highlighted in bold.

cells in 8 out of 11 donors (73%) using LMP2₃₄₅₋₃₅₂ pulsed DCs. In the positive control stimulations, EBNA3A specific CD8⁺ T cells could be detected in 9 of 11 donors (82%). After stimulation, the frequency of LMP2 specific CD8⁺ T cells ranged between 19-581/5 × 10⁴ cells. Similarly, 24-205/5 × 10⁴ EBNA3A specific CD8⁺ T cells could be obtained. These frequencies represent only two- to threefold expansion from the specific T cell numbers detected in fresh blood. This probably represents the fragility of purified CD8⁺ T cell populations that are difficult to maintain in the absence of cytokines and/or CD4⁺ T cells

The LMP2₃₄₅₋₃₅₂ peptide, CPLSKILL, was predicted to be the best HLA-B8 binder by the SYFPEITHI program (score 26) and in the top group of three peptides predicted to be equally well retained by HLA-B8 in the BIMAS analysis (t1/2 = 16.0 min)(Table 1). Only PProC version II predicted, however, that the proteasome can create the C-terminus of this peptide. Since this version also accommodates information about the termini of the natural HLA ligands it might not exclusively represent proteasomal specificity.

With the robust recognition of LMP2₃₄₅₋₃₅₂ in the majority of HLA-B8⁺ healthy EBV carriers, we next addressed the frequency of these CD8⁺ T cells in peripheral blood.

LMP2₃₄₅₋₃₅₂ is recognized less frequently than EBNA3A₃₂₅₋₃₃₃ in whole blood

IFN-γ production by CD8⁺ T cells in whole blood directly ex vivo was monitored after stimulation with EBNA3A₃₂₅₋₃₃₃ and LMP2₃₄₅₋₃₅₂ (Figure 2). As a positive control PHA and as negative controls medium and LMP2₃₄₇₋₃₅₅ stimulations were used. Responses in three representative

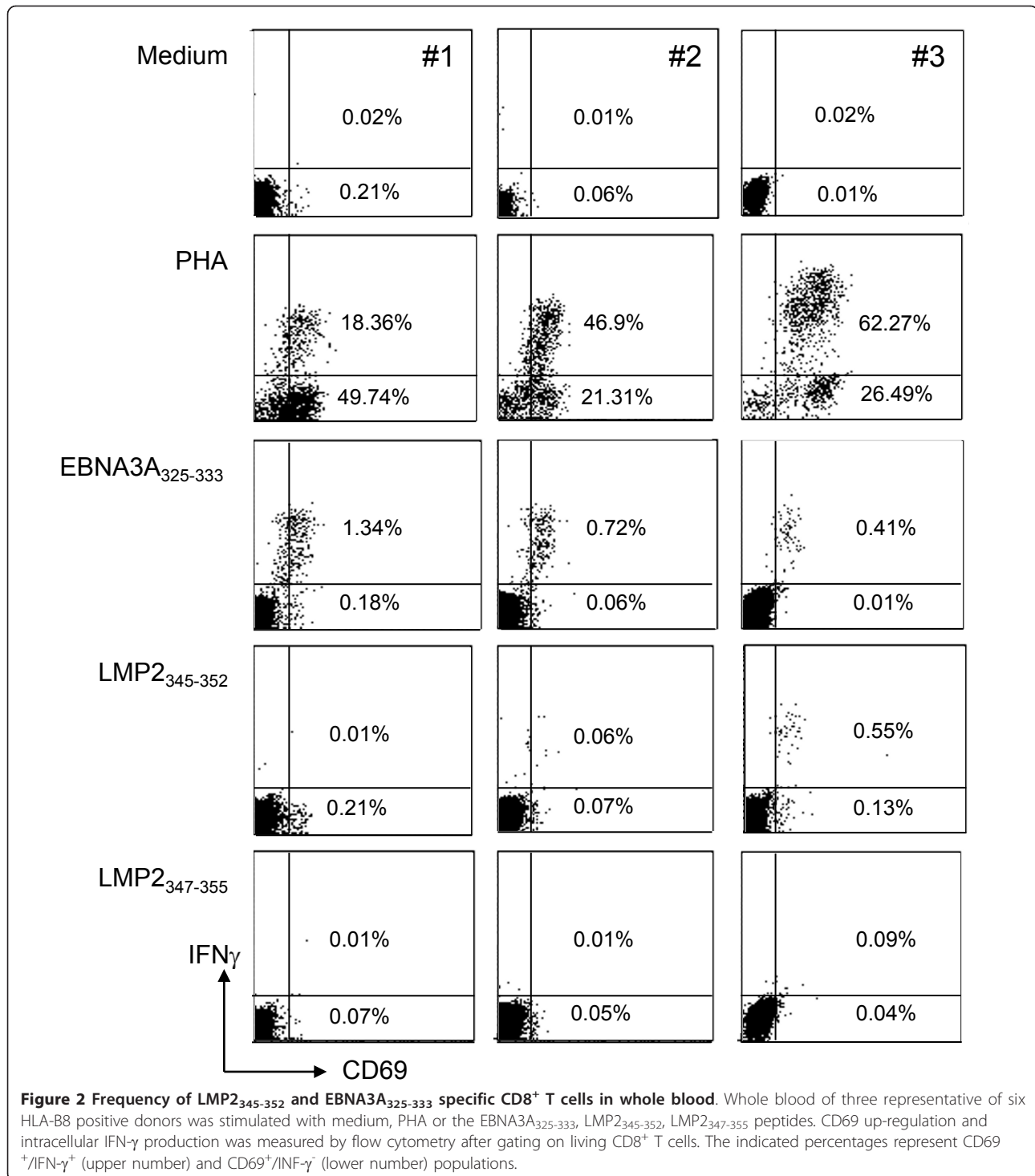
donors are shown in Figure 2. In donors with very strong EBNA3A₃₂₅₋₃₃₃ specific responses like #1, LMP2₃₄₅₋₃₅₂ specific IFN-γ producing CD8⁺ T cells were undetectable. In other donors, there was a tendency that the strength of EBNA3A and LMP2 specific responses were inversely correlated. In 5/6 donors LMP2₃₄₅₋₃₅₂ specific CD8⁺ T cells responses were of lower frequency than EBNA3A₃₂₅₋₃₃₃ specific responses. However, in 4/6 donors (67%) LMP2₃₄₅₋₃₅₂ specific CD8⁺ T cells responses were detectable ranging from 0.1 to 0.68%. 0.55% CD69⁺IFN-γ⁺ plus 0.13% CD69⁺IFN-γ⁻ of peripheral CD8⁺ T cells was the highest frequency detected for LMP2₃₄₅₋₃₅₂.

In vitro stimulation with peptide pulsed DCs can expand LMP2₄₂₆₋₄₃₄, LMP2₃₄₅₋₃₅₂ and EBNA3A₃₂₅₋₃₃₃ specific CD8⁺ T cell responses to high levels

HLA-B8⁺/-A2⁺ and HLA-B8⁺/-A2⁻ CD8⁺ T cells were stimulated for one week with LMP2₄₂₆₋₄₃₄, LMP2₃₄₅₋₃₅₂ and EBNA3A₃₂₅₋₃₃₃ peptide pulsed autologous DCs. After one week the cultures were assayed for IFN-γ secretion in ELISPOT by addition of the peptides (Figure 3). Figure 3A is representative for 3 HLA-A2⁺/-B8⁺ donors. In all donors LMP2₃₄₅₋₃₅₂ and LMP2₄₂₆₋₄₃₄ specific CD8⁺ T cells could be expanded to similar levels. Figure 3B is representative for three HLA-A2⁻/-B8⁺ donors whose LMP2₃₄₅₋₃₅₂ and EBNA3A₃₂₅₋₃₃₃ CD8⁺ T cells could be expanded to similar levels by peptide pulsed DCs. These donors were tested in addition to the donors described in Table 2.

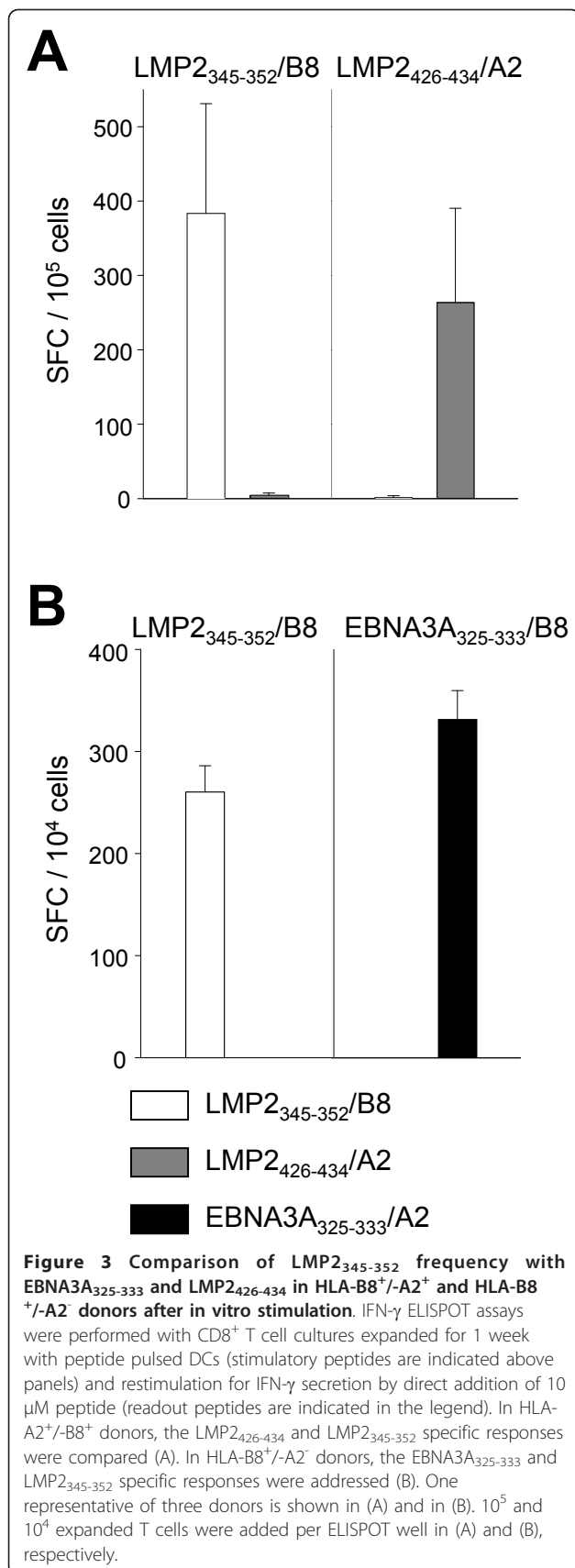
LMP2₃₄₅₋₃₅₂ and EBNA3A₃₂₅₋₃₃₃ specific CD8⁺ T cell clones uniformly up-regulate CD69 upon peptide encounter

Five LMP2₃₄₅₋₃₅₂ specific CD8⁺ T cell clones, #1-5, were generated from the 0.3 cells/well dilution of a CD8⁺ T cell



line with >1% frequency for this specificity. Upon addition of 10 μ l 1 mM LMP2₃₄₅₋₃₅₂ peptide solution (20 μ M final concentration) in combination with the co-stimulatory antibodies CD49d and CD28, these clones uniformly up-regulate CD69, while only 30-50% produced IFN- γ . Both parameters were measured after intracellular IFN- γ

staining and CD69 staining using flow cytometry. Similarly upon PHA stimulation, 30-70% produce IFN- γ , while nearly all clonal cells up-regulate CD69. As negative controls, medium only or the control peptide LMP2₃₄₇₋₃₅₅ were used (Figure 4A). For comparison within different antigen specificities, we subjected the EBNA3A₃₂₅₋₃₃₃



specific HLA-B8 restricted MS.B11 CD8⁺ T cell clone, generated by the same cloning strategy, to a similar analysis (Figure 4B). Again, CD69 was up-regulated on 65-78% of PHA stimulated clonal T cells, while IFN- γ production was induced in 38-41%. In response to the cognate EBNA3A₃₂₅₋₃₃₃ peptide, however, both CD69 as well as IFN- γ were induced in more than 95% of MS.B11 CD8⁺ T cells. Medium and the non-cognate LMP2₃₄₇₋₃₅₅ peptide served as negative controls. The homogeneity of CD69 up-regulation upon cognate peptide encounter argues that the obtained T cell populations, LMP2₃₄₅₋₃₅₂ specific clones #1-5 and the EBNA3A₃₂₅₋₃₃₃ specific MS.B11 clone, are indeed of singular antigen specificity. Since they were derived from 0.3 cells/well cloning plates with around 10 expanding wells per plate, these T cell populations can be considered clonal.

Together with the CD69/IFN- γ pattern observed in whole blood these findings indicate that determinations of antigen specific CD8⁺ T cell frequencies should take into account IFN- γ ⁺/CD69⁺ as well as IFN- γ ⁻/CD69⁺ T cells. This also holds true for EBNA1 specific CD4⁺ T cell clones (data not shown). Namely, after stimulation with epitope pulsed HLA matched lymphoma cells only a proportion (up to 70%) of CD69⁺ cells in an EBNA1 specific Th1 CD4⁺ T cell clone can be visualized by intracellular IFN- γ staining. Therefore, CD69 is not only suitable to co-stain and thereby better visualize IFN- γ secreting cells, but can detect additional antigen specific CTL that might appear IFN- γ negative at a given time-point, possibly due to lack of synchronization in their antigen response.

LMP2₃₄₅₋₃₅₂ specific CD8⁺ T cell clones recognize HLA-B8 matched LCL

The LMP2₃₄₅₋₃₅₂ specific CD8⁺ T cell clones were tested for recognition of HLA-B8 matched LCL in IFN- γ ELISPOT assays (Figure 5). The HLA-B8⁺ cell lines BM-LCL and SO-LCL were recognized by clones #2 and #3, while the HLA-B8⁻ lines CM-LCL, DC-LCL and LG2 stimulated no IFN- γ secretion. In comparison to direct addition of 5 μ l 1 mM LMP2₃₄₅₋₃₅₂ peptide solution to the ELISPOT wells (25 μ M final concentration), the response to the HLA matched LCLs was significantly lower. As a negative control, the same amount of the LMP2₃₄₇₋₃₅₅ peptide was added.

LMP2₃₄₅₋₃₅₂ specific CD8⁺ T cell clones are HLA-B8 restricted and recognize peptide concentrations down to 10 nM

IFN- γ secretion in response to HLA-B8⁺ and HLA-B8⁻ LCL was performed in the presence of increasing antibody concentrations (Figure 6A). Three antibodies were used: the HLA class I specific antibody w6/32, the HLA-DR specific antibody L243 and an HLA-B8 specific IgM antibody. Recognition of HLA-B8⁺ SO-LCL and BM-

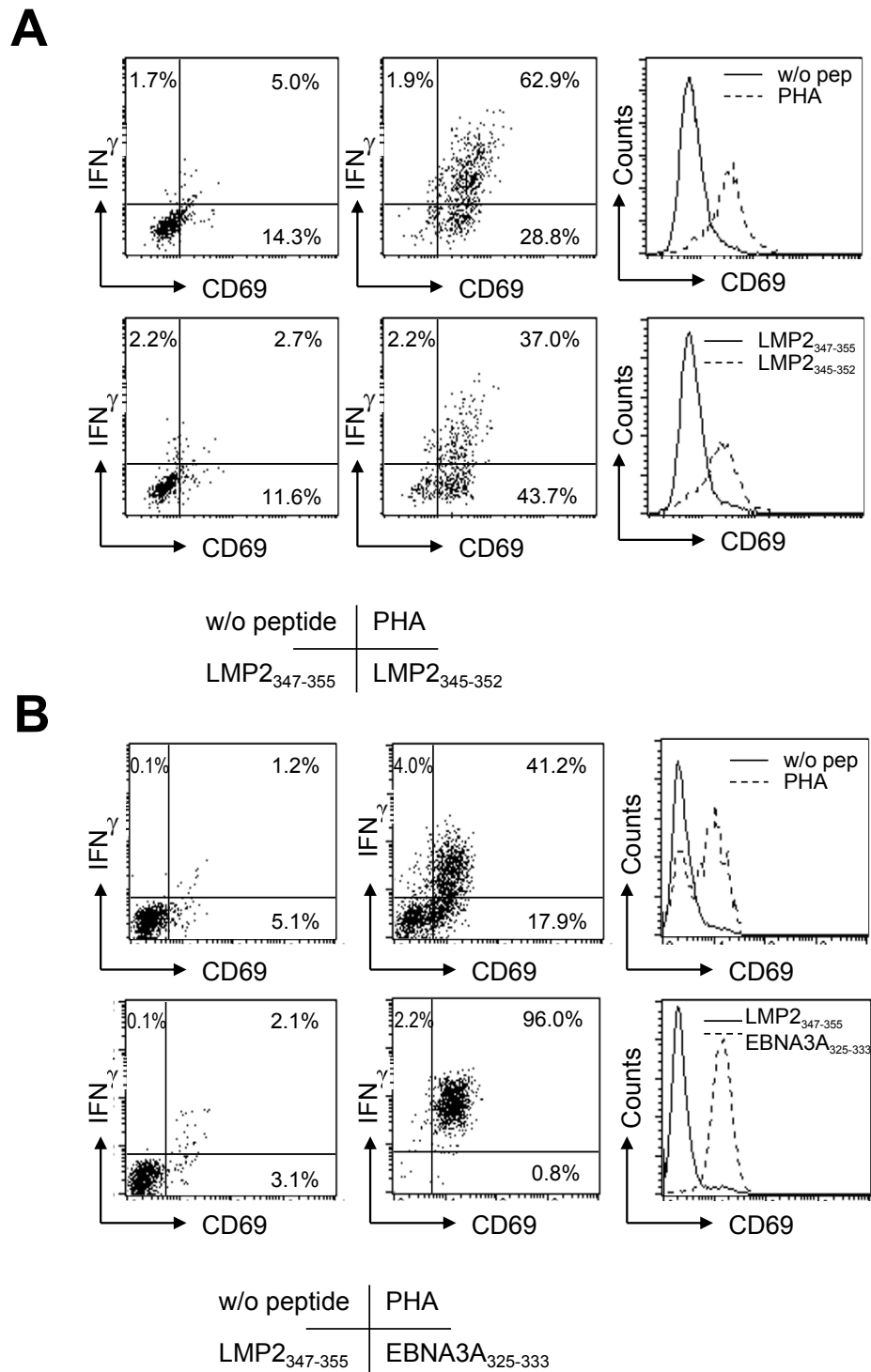
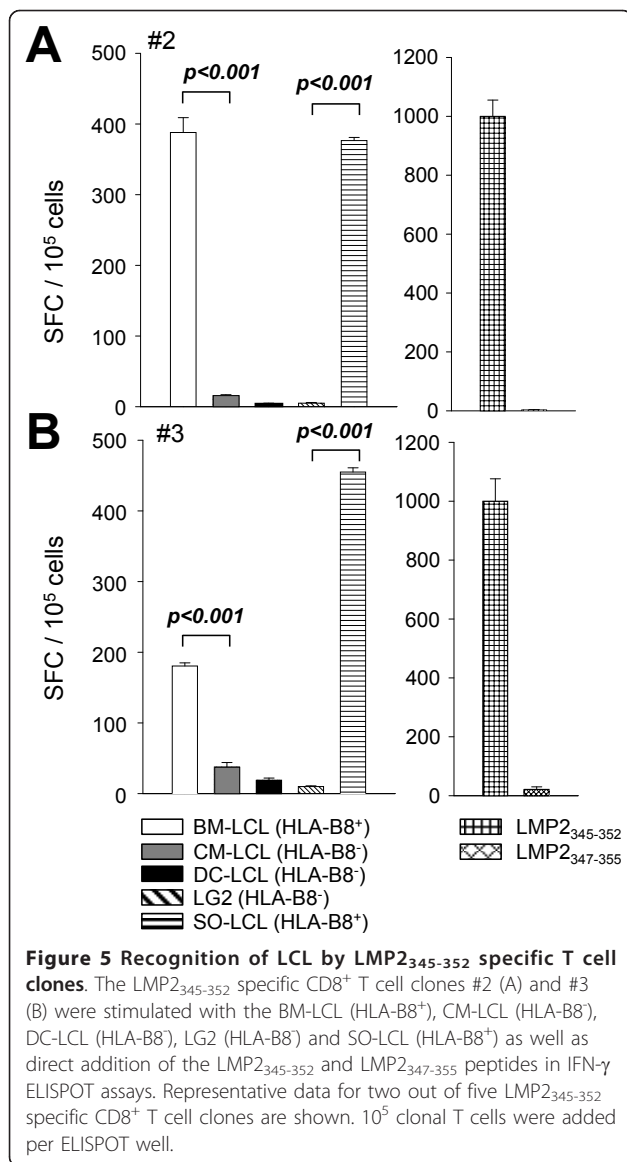


Figure 4 CD69 up-regulation and IFN- γ secretion by LMP2 and EBNA3A specific HLA-B8 restricted CD8⁺ T cell clones. Clonal T cells were stimulated with medium, PHA, the control LMP2₃₄₇₋₃₅₅ peptide or the cognate LMP2₃₄₅₋₃₅₂ or EBNA3A₃₂₅₋₃₃₃ peptides. CD69 surface expression and intracellular IFN- γ was analyzed. Dot blot and histogram analysis was performed after gating on CD8⁺ T cells. The LMP2₃₄₅₋₃₅₂ specific CD8⁺ T cell clone #3 (A) and the EBNA3A₃₂₅₋₃₃₃ specific CD8⁺ T cell clone MS.B11 (B) were analyzed. The presented data are representative for five LMP2₃₄₅₋₃₅₂ specific CD8⁺ T cell clones.



LCL by the LMP2₃₄₅₋₃₅₂ specific CD8⁺ T cell clones was inhibited by the w6/32 and α HLA-B8 antibodies, while L243 had only minimal effects on the recognition (example shown for clone #3 in Figure 3A). The HLA-B8⁻ cell lines T2 and LG2 served as negative controls.

In peptide titration experiments, recognition of the LMP2₃₄₅₋₃₅₂ epitope was still detectable at a concentration of 10 nM (Figure 6B). Half maximal recognition is difficult to determine in ELISPOT assays since cellular contact becomes limiting at low cell numbers and spot evaluation is difficult at high cell numbers per well.

LMP2₃₄₅₋₃₅₂ specific CD8⁺ T cell clones kill peptide pulsed targets and HLA-B8⁺ LCL

⁵¹Cr release assays were performed using peptide pulsed DCs or LCLs as targets and LMP2₃₄₅₋₃₅₂ specific CD8⁺

T cell clones as effectors (Figure 7). Figure 7A shows that LMP2₃₄₅₋₃₅₂ specific T cell clones selectively killed DCs pulsed with the cognate, but not with the non-cognate peptide. At an e/t ratio of 3:1, 30% specific lysis against LMP2₃₄₅₋₃₅₂ peptide pulsed DCs was obtained, while only 10% of the HLA-B8⁺ BM-LCL cells were killed (Figure 7B). The background lysis for HLA-B8⁻ T2 cells and LMP2₃₄₇₋₃₅₅ pulsed DCs was always below 5%. Therefore, killing of HLA-B8 matched LCL was 3 times lower than that of peptide pulsed targets. This corresponds to the reduced recognition of HLA-B8⁺ LCL in comparison to peptide addition in the ELISPOT assays and probably represents limiting epitope density on the LCL [34,35]. Similar cytolytic behavior was observed for all five LMP2₃₄₅₋₃₅₂ specific CD8⁺ T cell clones. Thus, the low cytotoxicity of LMP2₃₄₅₋₃₅₂ specific CD8⁺ T cells against autologous LCLs, although detectable in our in vitro assays, might have limited protective value in the immune control of virally transformed B cells in vivo.

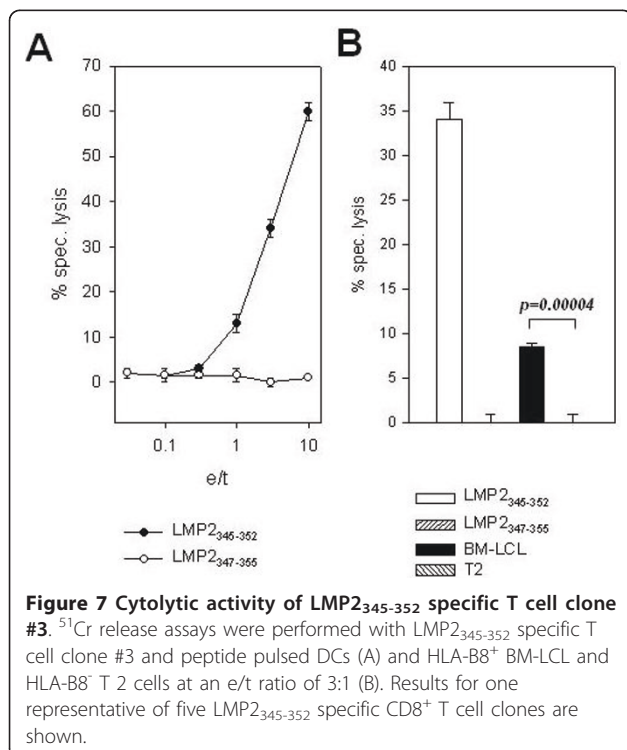
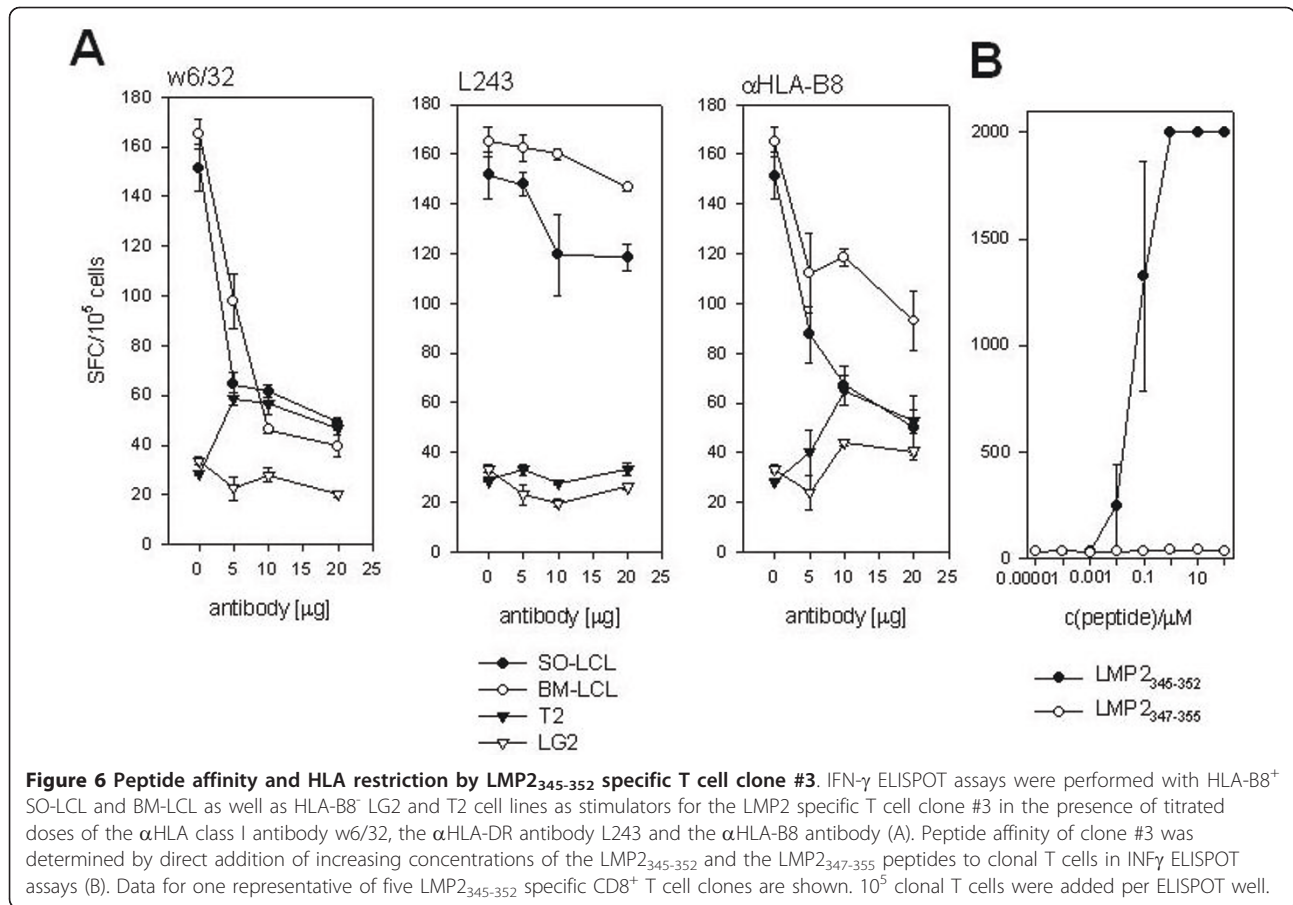
LMP2₃₄₅₋₃₅₂ specific CD8⁺ T cell clones recognize LMP2 expressing Hodgkin's lymphoma cells

In order to improve CD8⁺ T cell recognition by improved binding of the HLA-B8 restricted LMP2 epitope, we investigated the heteroclitic peptide CPKSKILL in which relative position 3, LMP2 amino acid 347, was changed from L to K according to the optimal HLA-B8 binding motif XXXKXKXXL [27]. Unfortunately, this change abolished the recognition by our LMP2₃₄₅₋₃₅₂ specific CD8⁺ T cell clones upon direct addition of the peptide into the ELISPOT assay (Figure 8A). The unchanged epitope and the LMP2₃₄₇₋₃₅₅ peptide were used as positive and negative controls, respectively.

Endogenous expression of LMP2 by recombinant vaccinia infection (vvLMP2) rendered EBV⁻ HLA-B8⁺ Hodgkin's cells recognizable for the LMP2₃₄₅₋₃₅₂ specific CD8⁺ T cell clones (Figure 8B). Control vaccinia infected, untreated and control peptide pulsed HDLM-2 cells did not cause IFN- γ secretion. LMP2₃₄₅₋₃₅₂ peptide pulsing, however, stimulated a stronger response than vvLMP2 infection. This can probably be explained by the low infection efficiency (10%) of our recombinant vaccinia viruses for B cell lines like Hodgkin's lymphoma, Burkitt's lymphoma and LCL (data not shown). The observed response against vvLMP2 infected HDLM-2 cells suggests that LMP2 gets processed onto HLA-B8 in the infected cells and therefore endogenously LMP2 expressing Hodgkin's lymphoma cells can be targeted by the LMP2₃₄₅₋₃₅₂ specific CD8⁺ T cell response.

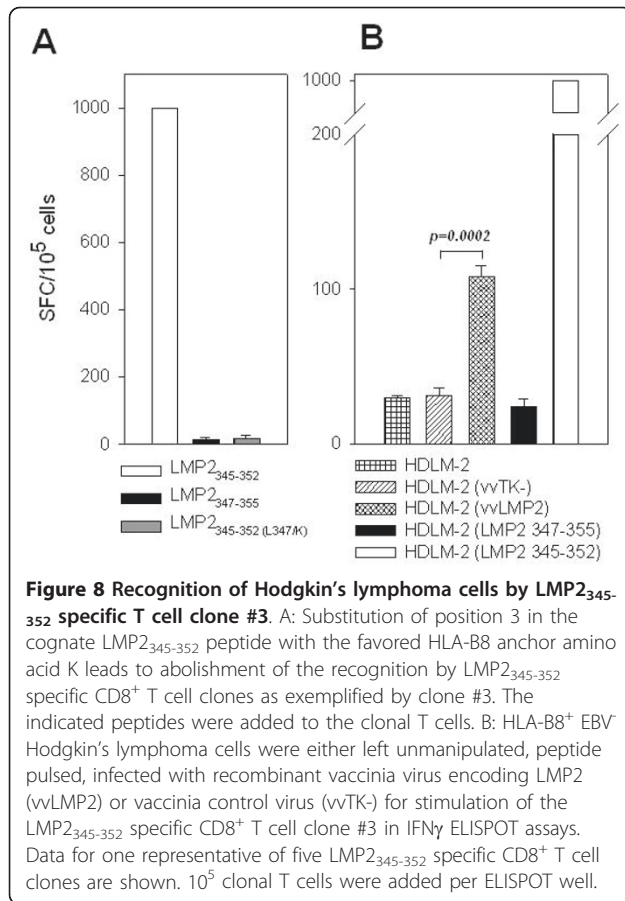
Discussion

In the present work we describe responses to the latent EBV antigen LMP2, which is expressed in Hodgkin's



lymphoma and nasopharyngeal carcinoma. We studied HLA-B8 restricted CD8⁺ T cell responses directed against this antigen and demonstrate that LMP2 reactivity is present despite the strong EBNA3A specific CD8⁺ T cell responses that are consistently associated with this HLA allele (this study and [25]). Furthermore, we determined the new HLA-B8 restricted epitope CPLSKILL (LMP2₃₄₅₋₃₅₂), recognized by LMP2 specific CD8⁺ T cells. Although the frequency in whole peripheral blood is usually lower for LMP2 specific than for EBNA3A specific HLA-B8 restricted CD8⁺ T cells, both reactivities can be expanded to similar levels upon in vitro stimulation with peptide pulsed DCs. The LMP2₃₄₅₋₃₅₂ specific CD8⁺ T cell clones that we isolated could recognize endogenously expressed LMP2 of HLA-B8⁺ LCL and Hodgkin's lymphoma cells, leading to IFN- γ secretion and cytotoxicity.

Our data suggest that even in HLA haplotypes like HLA-B8 that give rise to strong CD8⁺ T cell responses against the EBNA3 antigens, LMP2 specific CD8⁺ T cell responses are present. However, unlike the EBNA3 antigens, LMP2 is also expressed in EBV associated malignancies like Hodgkin's lymphoma and nasopharyngeal carcinoma that have lost EBNA3 expression [4]. Thus, induction and maintenance of EBV specific T cells



against antigens present in these tumors might be necessary to restrict transition from infected centroblast and -cytes with the same EBV antigen expression to Hodgkin's lymphoma. Indeed selective loss of individual T cell specificities against EBV antigens have been found in patients with Hodgkin's lymphoma, Burkitt's lymphoma and AIDS associated EBV positive lymphoma [36-38]. In these instances loss of EBNA1 specific T cell reactivity was found. This selective loss might favor the escape of EBV associated tumors with restricted antigen expression, and LMP2 specific T cell responses should also be investigated along these lines.

In the case of nasopharyngeal carcinoma, an epithelial tumor that is to 100% associated with EBV, the EBV latent antigen expression might even be further restricted to mainly EBNA1 and LMP2. EBNA1 and LMP2 mRNA are easily detected by RT-PCR in samples of this tumor, while LMP1 message is difficult to amplify. LMP1 protein is even undetectable in up to 65% of NPC biopsies [39,40]. Moreover, NPC patients are the only EBV carriers that reproducibly develop LMP2 specific antibody responses [41,42], indicating a significant level of LMP2 protein expression. The

etiology of NPC is still unclear. However, systemic loss of T cell responses against distinct EBV antigens could so far not be documented, even so individual T cell specificities restricted by certain HLA alleles were found to be compromised [43]. Instead, suppression of these systemic T cell responses in the local tumor microenvironment have been suggested [44,45]. Therefore, EBV associated lymphomas might escape immune control in part due to systemic loss of distinct EBV antigen specific T cell responses, while nasopharyngeal carcinoma might develop in the presence of unaltered systemic EBV specific T cell responses due to an immune suppressive tumor microenvironment [46].

The efficient expansion of LMP2₃₄₅₋₃₅₂ specific CD8⁺ T cells from low starting frequencies with peptide-pulsed DCs suggests that DCs could be used to expand EBV latency II specific CD8⁺ T cells. For dominant HLA class I restricted EBV derived CD8⁺ T cell epitopes this has been reported previously [47-49]. Here we extend this finding to demonstrate that initially subdominant CD8⁺ T cell responses can be boosted in vitro to similar levels as the dominant EBV responses using peptide pulsed DCs. These results are in line with efficient expansion of LMP2 specific T cells with antigen expressing DCs for adoptive transfer into Hodgkin's lymphoma patients [50]. Moreover, EBV antigen presenting DCs can also prime, and not only restimulate protective T cell responses [51,52]. Therefore, subdominant, but tumor associated EBV antigen expression in DCs should be explored as immunotherapy against spontaneously occurring EBV associated malignancies with reduced viral antigen expression.

In conclusion, our findings suggest that LMP2 specific CD8⁺ T cells are primed and maintained even in HLA haplotypes that generate strong EBNA3 specific CD8⁺ T cell responses. The LMP2 response might be necessary to prevent and treat EBV associated malignancies with reduced viral antigen expression like Hodgkin's lymphoma, inhibiting the outgrowth of transformed EBV⁺ germinal center B cells that express this protein.

Acknowledgements

This work was in part supported by the National Cancer Institute (R01CA108609), the Swiss National Science Foundation (310030_126995), the Sassa Foundation (10/02) and Cancer Research Switzerland (KFS-02652-08-2010).

Author details

¹Laboratory of Cellular Physiology and Immunology, The Rockefeller University, New York, USA. ²Viral Immunobiology, Institute of Experimental Immunology, University of Zürich, Zürich, Switzerland.

Authors' contributions

MLT performed the experiments and wrote part of the manuscript. CM designed the study and wrote part of the manuscript. All authors read and approved the final manuscript.

Competing interests

The authors declare that they have no competing interests.

Received: 30 November 2010 Accepted: 11 February 2011

Published: 11 February 2011

References

- Babcock JG, Hochberg D, Thorley-Lawson AD: The expression pattern of Epstein-Barr virus latent genes in vivo is dependent upon the differentiation stage of the infected B cell. *Immunity* 2000, **13**:497-506.
- Young LS, Rickinson AB: Epstein-Barr virus: 40 years on. *Nat Rev Cancer* 2004, **4**:757-768.
- Babcock GJ, Thorley-Lawson DA: Tonsillar memory B cells, latently infected with Epstein-Barr virus, express the restricted pattern of latent genes previously found only in Epstein-Barr virus-associated tumors. *Proc Natl Acad Sci USA* 2000, **97**:12250-12255.
- Kutok JL, Wang F: Spectrum of Epstein-Barr virus-associated diseases. *Annu Rev Pathol* 2006, **1**:375-404.
- Babcock GJ, Decker LL, Volk M, Thorley-Lawson DA: EBV persistence in memory B cells in vivo. *Immunity* 1998, **9**:395-404.
- Hochberg D, Middeldorp JM, Catalina M, Sullivan JL, Luzuriaga K, Thorley-Lawson DA: Demonstration of the Burkitt's lymphoma Epstein-Barr virus phenotype in dividing latently infected memory cells in vivo. *Proc Natl Acad Sci USA* 2004, **101**:239-244.
- Hislop AD, Taylor GS, Sauce D, Rickinson AB: Cellular responses to viral infection in humans: lessons from Epstein-Barr virus. *Annu Rev Immunol* 2007, **25**:587-617.
- Morra M, Howie D, Grande MS, Sayos J, Wang N, Wu C, Engel P, Terhorst C: X-linked lymphoproliferative disease: a progressive immunodeficiency. *Annu Rev Immunol* 2001, **19**:657-682.
- Levine AM: Acquired immunodeficiency syndrome-related lymphoma. *Blood* 1992, **80**:8-20.
- Boshoff C, Weiss R: AIDS-related malignancies. *Nature Reviews Immunology* 2002, **2**:373-382.
- Gottschalk S, Rooney CM, Heslop HE: Post-transplant lymphoproliferative disorders. *Annu Rev Med* 2005, **56**:29-44.
- Koehne G, Smith KM, Ferguson TL, Williams RY, Heller G, Pamer EG, Dupont B, O'Reilly RJ: Quantitation, selection, and functional characterization of Epstein-Barr virus-specific and alloreactive T cells detected by intracellular interferon-gamma production and growth of cytotoxic precursors. *Blood* 2002, **99**:1730-1740.
- Gottschalk S, Ng CY, Perez M, Smith CA, Sample C, Brenner MK, Heslop HE, Rooney CM: An Epstein-Barr virus deletion mutant associated with fatal lymphoproliferative disease unresponsive to therapy with virus-specific CTLs. *Blood* 2001, **97**:835-843.
- Hislop AD, Annels NE, Gudgeon NH, Leese AM, Rickinson AB: Epitope-specific Evolution of Human CD8⁺ T Cell Responses from Primary to Persistent Phases of Epstein-Barr Virus Infection. *J Exp Med* 2002, **195**:893-905.
- Murray RJ, Kurilla MG, Brooks JM, Thomas WA, Rowe M, Kieff E, Rickinson AB: Identification of target antigens for the human cytotoxic T cell response to Epstein-Barr virus (EBV): implications for the immune control of EBV-positive malignancies. *J Exp Med* 1992, **176**:157-168.
- Yang J, Lemas VM, Flinn IW, Krone C, Ambinder RF: Application of the ELISPOT assay to the characterization of CD8⁺ responses to Epstein-Barr virus antigens. *Blood* 2000, **95**:241-248.
- Lautscham G, Mayrhofer S, Taylor G, Haigh T, Leese A, Rickinson A, Blake N: Processing of a multiple membrane spanning Epstein-Barr virus protein for CD8⁺ T cell recognition reveals a proteasome-dependent, transporter associated with antigen processing-independent pathway. *J Exp Med* 2001, **194**:1053-1068.
- Gorga JC, Horejsi V, Johnson DR, Raghupathy R, Strominger JL: Purification and characterization of class II histocompatibility antigens from a homozygous human B cell line. *J Biol Chem* 1987, **262**:16087-16094.
- Münz C, Bickham KL, Subklewe M, Tsang ML, Chahroudi A, Kurilla MG, Zhang D, O'Donnell M, Steinman RM: Human CD4⁺ T lymphocytes consistently respond to the latent Epstein-Barr virus nuclear antigen EBNA1. *J Exp Med* 2000, **191**:1649-1660.
- Salter RD, Howell DN, Cresswell P: Genes regulating HLA class I antigen expression in T-B lymphoblast hybrids. *Immunogenetics* 1985, **21**:235-246.
- Subklewe M, Chahroudi A, Schmaljohn A, Kurilla MG, Bhardwaj N, Steinman RM: Induction of Epstein-Barr virus-specific cytotoxic T-lymphocyte responses using dendritic cells pulsed with EBNA-3A peptides or UV-inactivated, recombinant EBNA-3A vaccinia virus. *Blood* 1999, **94**:1372-1381.
- Fonteneau JF, Larsson M, Somersan S, Sanders C, Münz C, Kwok WW, Bhardwaj N, Jotereau F: Generation of high quantities of viral and tumor-specific human CD4⁺ and CD8⁺ T-cell clones using peptide pulsed mature dendritic cells. *J Immunol Methods* 2001, **258**:111-126.
- Lampson LA, Levy R: Two populations of Ia-like molecules on a human B cell line. *J Immunol* 1980, **125**:293-299.
- Barnstable CJ, Bodmer WF, Brown G, Galfre G, Milstein C, Williams AF, Ziegler A: Production of monoclonal antibodies to group A erythrocytes, HLA and other human cell surface antigens-new tools for genetic analysis. *Cell* 1978, **14**:9-20.
- Burrows SR, Scully TB, Misko IS, Schmidt C, Moss DJ: An Epstein-Barr virus-specific cytotoxic T cell epitope in EBV nuclear antigen 3 (EBNA 3). *J Exp Med* 1990, **171**:345-349.
- Mori M, Beatty PG, Graves M, Boucher KM, Milford EL: HLA gene and haplotype frequencies in the North American population: the National Marrow Donor Program Donor Registry. *Transplantation* 1997, **64**:1017-1027.
- Rammensee H, Bachmann J, Emmerich NP, Bachor OA, Stevanovic S: SYFPEITHI: database for MHC ligands and peptide motifs. *Immunogenetics* 1999, **50**:213-219.
- Parker KC, Bednarek MA, Coligan JE: Scheme for ranking potential HLA-A2 binding peptides based on independent binding of individual peptide side-chains. *J Immunol* 1994, **152**:163-175.
- Nussbaum AK, Kuttler C, Haderer KP, Rammensee HG, Schild H: PAPROC: a prediction algorithm for proteasomal cleavages available on the www. *Immunogenetics* 2001, **53**:87-94.
- Kuttler C, Nussbaum AK, Dick TP, Rammensee HG, Schild H, Haderer KP: An algorithm for the prediction of proteasomal cleavages. *J Mol Biol* 2000, **298**:417-429.
- Kesmir C, Nussbaum AK, Schild H, Detours V, Brunak S: Prediction of proteasome cleavage motifs by neural networks. *Protein Engineering* 2002, **15**:287-296.
- Mo XY, Cascio P, Lemerise K, Goldberg AL, Rock K: Distinct proteolytic processes generate the C and N termini of MHC class I-binding peptides. *J Immunol* 1999, **163**:5851-5859.
- Haderer KP, Kuttler C, Nussbaum AK: Cleaving proteins for the immune system. *Math Biosci* 2004, **188**:63-79.
- Hill AB, Lee SP, Haurum JS, Murray N, Yao QY, Rowe M, Signorel N, Rickinson AB, McMichael AJ: Class I major histocompatibility complex-restricted cytotoxic T lymphocytes specific for Epstein-Barr virus (EBV)-transformed B lymphoblastoid cell lines against which they were raised. *J Exp Med* 1995, **181**:2221-2228.
- Crotzer VL, Christian RE, Brooks JM, Shabanowitz J, Settlage RE, Marto JA, White FM, Rickinson AB, Hunt DF, Engelhard VH: Immunodominance among EBV-derived epitopes restricted by HLA-B27 does not correlate with epitope abundance in EBV-transformed B-lymphoblastoid cell lines. *J Immunol* 2000, **164**:6120-6129.
- Heller KN, Arrey F, Steinherz P, Portlock C, Chadburn A, Kelly K, Münz C: Patients with Epstein Barr virus positive lymphomas have decreased CD4⁺ T cell responses to the viral nuclear antigen 1. *Int J Cancer* 2008, **123**:2824-2831.
- Moormann AM, Heller KN, Chelimo K, Embury P, Ploutz-Snyder R, Otieno JA, Oduor M, Münz C, Rochford R: Children with endemic Burkitt lymphoma are deficient in EBNA1-specific IFN-gamma T cell responses. *Int J Cancer* 2009, **124**:1721-1726.
- Piriou E, van Dort K, Nanlohy NM, van Oers MH, Miedema F, van Baarle D: Loss of EBNA1-specific memory CD4⁺ and CD8⁺ T cells in HIV-infected patients progressing to AIDS-related non-Hodgkin lymphoma. *Blood* 2005, **106**:3166-3174.
- Fahraeus R, Fu HL, Ernberg I, Finke J, Rowe M, Klein G, Falk K, Nilsson E, Yadav M, Busson P, Tursz T, Kallin B: Expression of Epstein-Barr virus-encoded proteins in nasopharyngeal carcinoma. *Int J Cancer* 1988, **42**:329-338.
- Young LS, Dawson CW, Clark D, Rupani H, Busson P, Tursz T, Johnson A, Rickinson AB: Epstein-Barr virus gene expression in nasopharyngeal carcinoma. *J Gen Virol* 1988, **69**:1051-1065.

41. Frech B, Zimmer-Strobl U, Suentzenich KO, Pavlish O, Lenoir GM, Bornkamm GW, Mueller-Lantzsch N: **Identification of Epstein-Barr virus terminal protein 1 (TP1) in extracts of four lymphoid cell lines, expression in insect cells, and detection of antibodies in human sera.** *J Virol* 1990, **64**:2759-2767.
42. Lennette ET, Winberg G, Yadav M, Enblad G, Klein G: **Antibodies to LMP2A/2B in EBV-carrying malignancies.** *Eur J Cancer* 1995, **31A**:1875-1878.
43. Lin X, Gudgeon NH, Hui EP, Jia H, Qun X, Taylor GS, Barnardo MC, Lin CK, Rickinson AB, Chan AT: **CD4 and CD8 T cell responses to tumour-associated Epstein-Barr virus antigens in nasopharyngeal carcinoma patients.** *Cancer Immunol Immunother* 2007, **57**:963-975.
44. Li J, Zeng XH, Mo HY, Rolen U, Gao YF, Zhang XS, Chen QY, Zhang L, Zeng MS, Li MZ, et al: **Functional Inactivation of EBV-Specific T-Lymphocytes in Nasopharyngeal Carcinoma: Implications for Tumor Immunotherapy.** *PLoS ONE* 2007, **2**:e1122.
45. Lau KM, Cheng SH, Lo KW, Lee SA, Woo JK, van Hasselt CA, Lee SP, Rickinson AB, Ng MH: **Increase in circulating Foxp3⁺CD4⁺CD25^{high} regulatory T cells in nasopharyngeal carcinoma patients.** *Br J Cancer* 2007, **96**:617-622.
46. Münz C, Moormann A: **Immune escape by Epstein-Barr virus associated malignancies.** *Semin Cancer Biol* 2008, **18**:381-387.
47. Subklewe M, Chahroudi A, Bickham K, Larsson M, Kurilla MG, Bhardwaj N, Steinman RM: **Presentation of Epstein-Barr virus latency antigens to CD8⁺, interferon-gamma-secreting, T lymphocytes.** *Eur J Immunol* 1999, **29**:3995-4001.
48. Redchenko IV, Rickinson AB: **Assessing Epstein-Barr virus-specific T-cell memory with peptide-loaded dendritic cells.** *J Virol* 1999, **73**:334-342.
49. Subklewe M, Sebelin K, Block A, Meier A, Roukens A, Paludan C, Fonteneau JF, Steinman RM, Münz C: **Dendritic Cells Expand Epstein Barr Virus Specific CD8⁺ T Cell Responses More Efficiently Than EBV Transformed B Cells.** *Hum Immunol* 2005, **66**:938-949.
50. Bollard CM, Straathof KC, Huls MH, Leen A, Lacuesta K, Davis A, Gottschalk S, Brenner MK, Heslop HE, Rooney CM: **The generation and characterization of LMP2-specific CTLs for use as adoptive transfer from patients with relapsed EBV-positive Hodgkin disease.** *J Immunother* 2004, **27**:317-327.
51. Bickham K, Goodman K, Paludan C, Nikiforow S, Tsang ML, Steinman RM, Münz C: **Dendritic cells initiate immune control of Epstein-Barr virus transformation of B lymphocytes in vitro.** *J Exp Med* 2003, **198**:1653-1663.
52. Hanley PJ, Cruz CR, Savoldo B, Leen AM, Stanojevic M, Khalil M, Decker W, Mollndrem JJ, Liu H, Gee AP, Krance RA, Brenner MK, Heslop HE, Rooney CM, Bollard CM: **Functionally active virus-specific T cells that target CMV, adenovirus, and EBV can be expanded from naive T-cell populations in cord blood and will target a range of viral epitopes.** *Blood* 2009, **114**:1958-1967.

doi:10.1186/2042-4280-2-4

Cite this article as: Tsang and Münz: Cytolytic T lymphocytes from HLA-B8⁺ donors frequently recognize the Hodgkin's lymphoma associated latent membrane protein 2 of Epstein Barr virus. *Herpesviridae* 2011 **2**:4.

**Submit your next manuscript to BioMed Central
and take full advantage of:**

- Convenient online submission
- Thorough peer review
- No space constraints or color figure charges
- Immediate publication on acceptance
- Inclusion in PubMed, CAS, Scopus and Google Scholar
- Research which is freely available for redistribution

Submit your manuscript at
www.biomedcentral.com/submit

